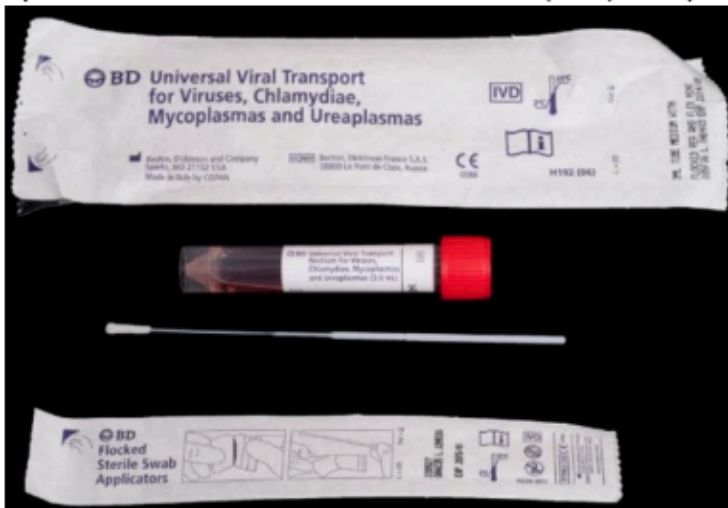


PROCEDURE FOR COVID-19 TESTING OF AMBULATORY PATIENTS

1. Obtain 1 nasopharyngeal (NP) swab specimen & 1 oropharyngeal (OP/throat) swab specimen:
 - a. Both swabs must be synthetic fiber (i.e., NOT bacterial culture swabs). See fig. 1
 - b. NP swab is inserted to the posterior nasopharynx parallel to the palate and rotated. Leave swab in place for a few seconds to absorb secretions. Sample 1 nostril. See fig. 2
 - c. OP swab should reach the posterior pharynx, avoiding the tongue.
 - d. Place BOTH swabs into a SINGLE universal (viral) transport media tube

Figure 1. NP and OP swab materials:

Synthetic fiber flocked swab and universal (viral) transport media



← Kit contains 1 swab and media tube

← Single swab package – contains 1 swab

Figure 2. NP swab technique:



You will need 2 swabs, 1 for NP and 1 for OP. 1 swab in the kit and another individually packaged swab.